

HPE Right Mix Advisor

Discover, Assess, plan

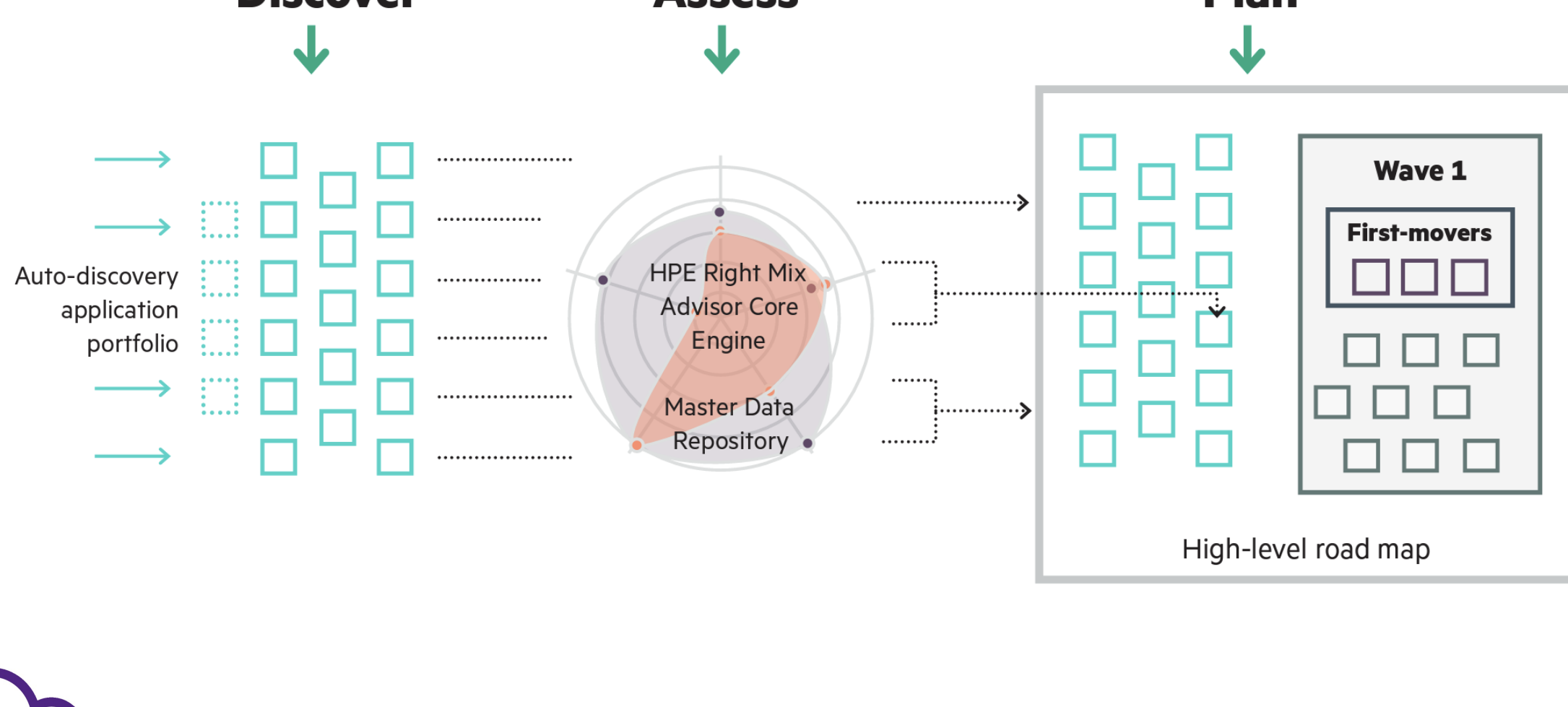
Right Mix Advisor - RMA

It's a HPE's internal tool which helps business to build their right mix of hybrid cloud strategies for successful application migration

Master Data Repository - MDR

RMA discovers & assess the application in order to create & populate a Master Data Repository required to manage the unique data requirements of application migration.

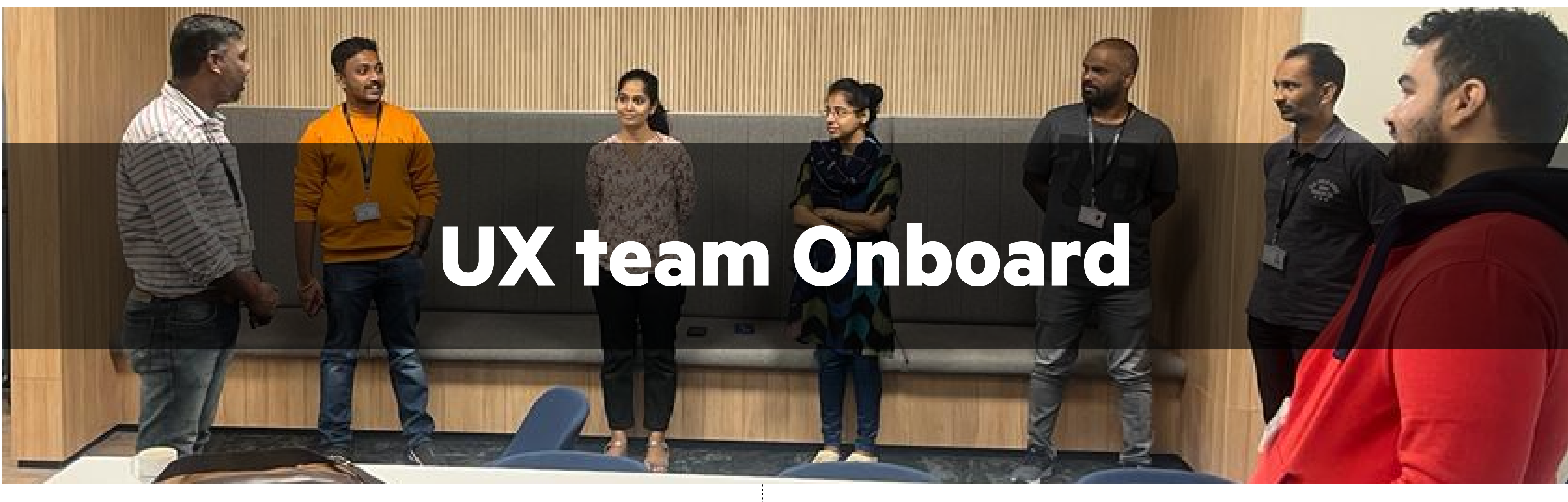
Using this data, HPE Right Mix Advisor recommends the hybrid cloud destination and migration approach for each of the targeted applications



The product is not up to the HPE standards when PO tries to sell it. They made the decision to revamp the portal with a better user experience to bring it into line with other HPE Products.

They believe that would unquestionably produce a greater reach.

“ Let's meet with our UX team and enlist their assistance..! ”

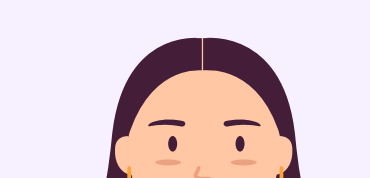


We began by analyzing the product's architecture, flow, and how it aids our personas in achieving their objectives. 🤖



Luis
MDR Project Admin

Administrator is responsible for the data collection and ensure data quality.



Susan
Consultant

Analyze data to design target migration approach. Performs the migration planning and the execution.

“ We decided to figure out their painpoints/challenges on module wise. Asked them to perform certain tasks and observed how they are doing ”

We got to know that..

- we can't change few patterns that they have been using efficiently
- A heuristic evaluation would be a apt technique to evaluate the entire product to align it with other HPE standards and improve the usability

Heuristic Principles



Critiq Workshop

We internally conducted a workshop to have critiq analysis with the help of heuristic and other design principles. We visualized the votes in terms of severity

Heuristic Evaluation Report

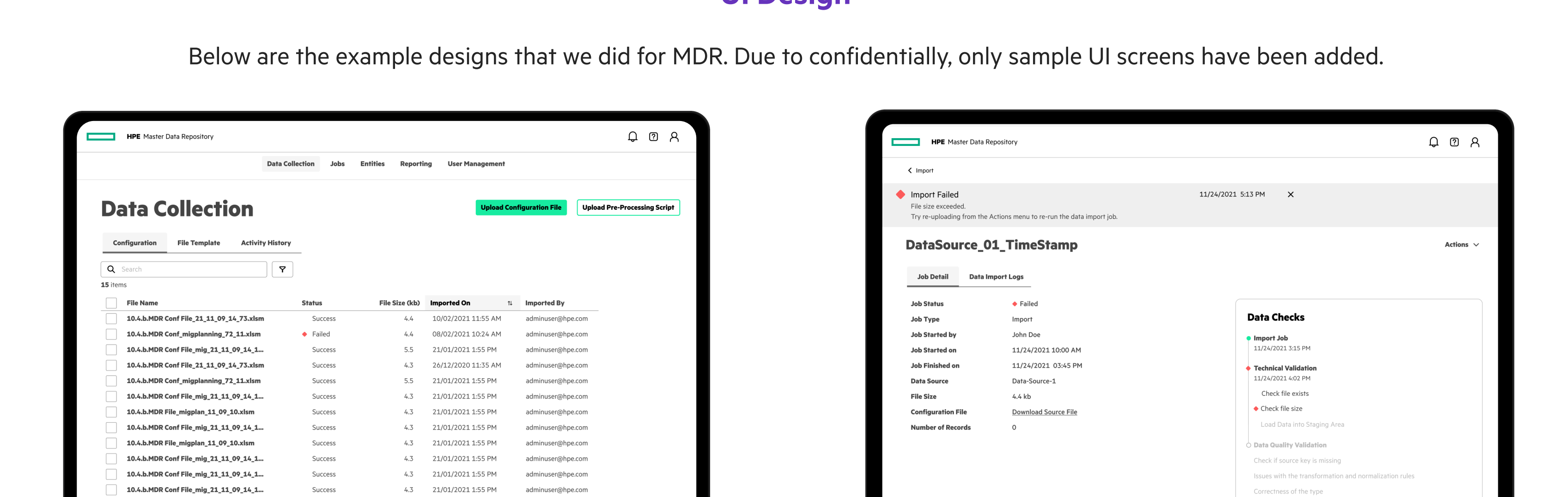
Screenshots of the current implementation, issues marked with severity, our recommendations, and "How to read" instructions are included in the evaluation report that we produced.

Final Evaluation Report

An evaluation report that listed all the issues and the suggested fixes has been demoeed to the team

UI Design

Below are the example designs that we did for MDR. Due to confidentiality, only sample UI screens have been added.



Area of focus :

- Alliging it with HPE design standards
- Dedicated sections/banners to briefly show the failure cases and guide the user on the next step.
- An accessible way to have a quick look at entities and compare those within a specific tab
- A details page with a segregated group of information
- An effective level of control for viewing the relationships between all the entities in a mapping representation diagram



It's a very good experience when we have to churn out things in a short span of time. Finding the ideal method was the key role play for getting things done effectively.